
From Hardship to Hope:

**VADER Analysis of
Sentiment in U.S.
Inaugural Speeches**

Orange 7 - Clayton Casper, Landon Docherty,
Macy Faw, Kyle Hardy, Cassidy Morales

Of the 3 speeches analyzed, VADER determined sentiment with...

20.5% false positives



16.4 % false negatives

...on average.



Inauguration of 29th President Warren G. Harding (1921)

The Roaring 20s

1921



Lang. D. "White Angel Bread Line, San Francisco"

COVID-19

2020



H. Ford and the Model-T

1933

The Great Depression



Workers preparing to disinfect a central railway station

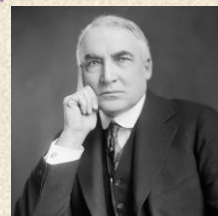
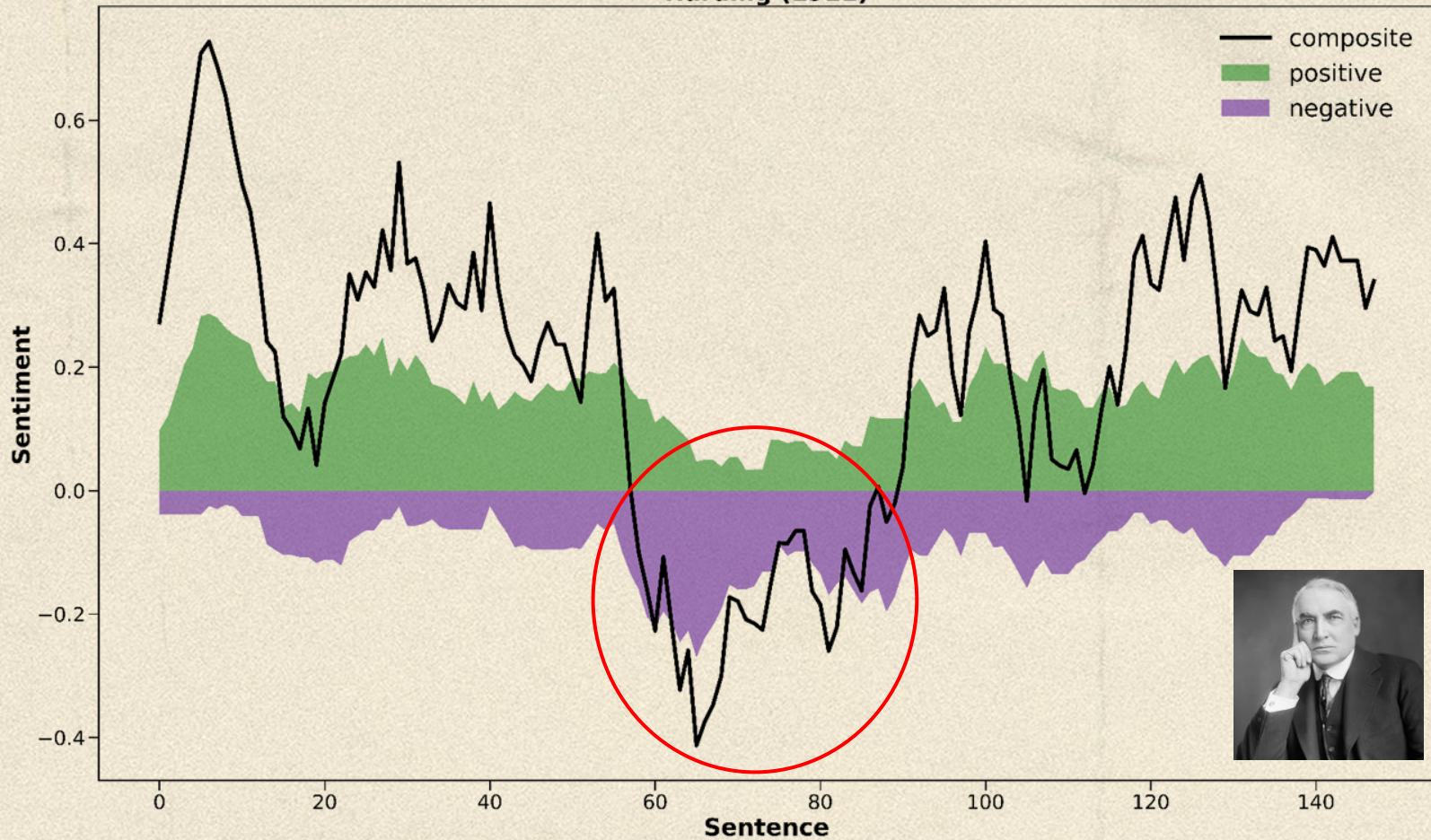
The Roaring 20s

1921



H. Ford and the Model-T

Harding (1921)





We crave friendship and
harbor no hate.



—Warren G. Harding

Compound: -0.4588

Neg: 0.461

Neu: 0.312

Pos: 0.227

The Roaring 20s

1921



Lang. D. "White Angel Bread Line, San Francisco"

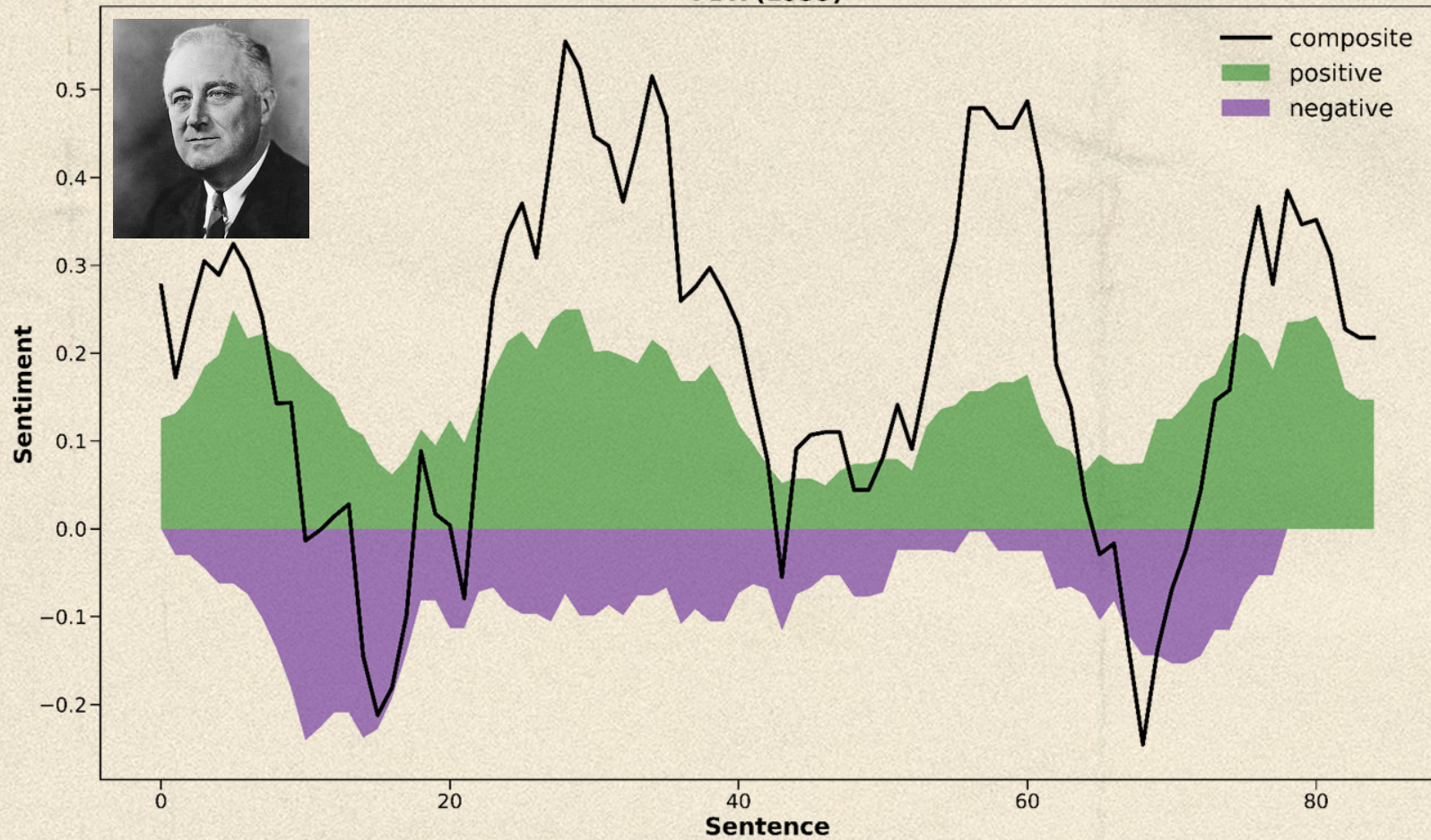


H. Ford and the Model-T

1933

The Great Depression

FDR (1933)





only a foolish optimist can
deny the dark realities of
the moment.



—Franklin D. Roosevelt

Compound: -0.0258

Neg: 0.283


Neu: 0.503

Pos: 0.214



Word Breakdown

| | |
|-----------------|----------------|
| Foolish | Negative: -1.1 |
| Optimist | Positive: 2.4 |
| Deny | Negative: -1.4 |





only a **foolish optimist**
can **deny** the dark
realities of the moment.



—Franklin D. Roosevelt

Compound: -0.0258

Neg: 0.283

Neu: 0.503

Pos: 0.214



stripped of the lure of profit by
which to induce our people to
follow their false leadership,
they have resorted to
exhortations, pleading tearfully for
restored confidence.



—Franklin D. Roosevelt

Compound: 0.823

Neg: 0.0


Neu: 0.736

Pos: 0.264



Word Breakdown

| | |
|-------------------|---------------|
| Profit | Positive: 1.9 |
| Restored | Positive: 1.4 |
| Confidence | Positive: 2.3 |





stripped of the lure of **profit** by
which to induce our people to
follow their false leadership,
they have resorted to exhortations,
pleading tearfully for **restored**
confidence.



—Franklin D. Roosevelt

Compound: 0.823

Neg: 0.0

Neu: 0.736

Pos: 0.264

The Roaring 20s

1921



Lang. D. "White Angel Bread Line, San Francisco"

COVID-19

2020



H. Ford and the Model-T

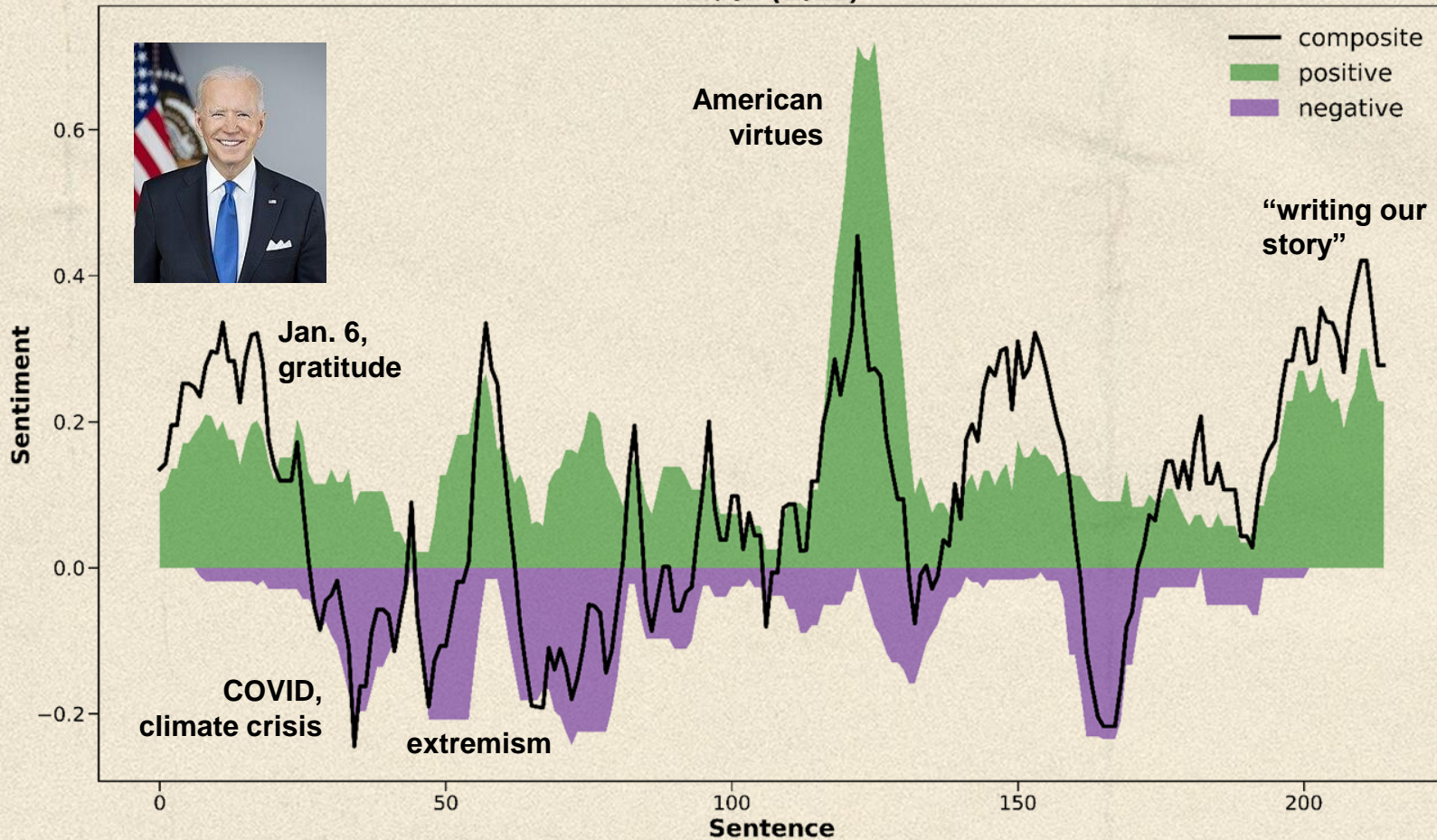
1933

The Great Depression

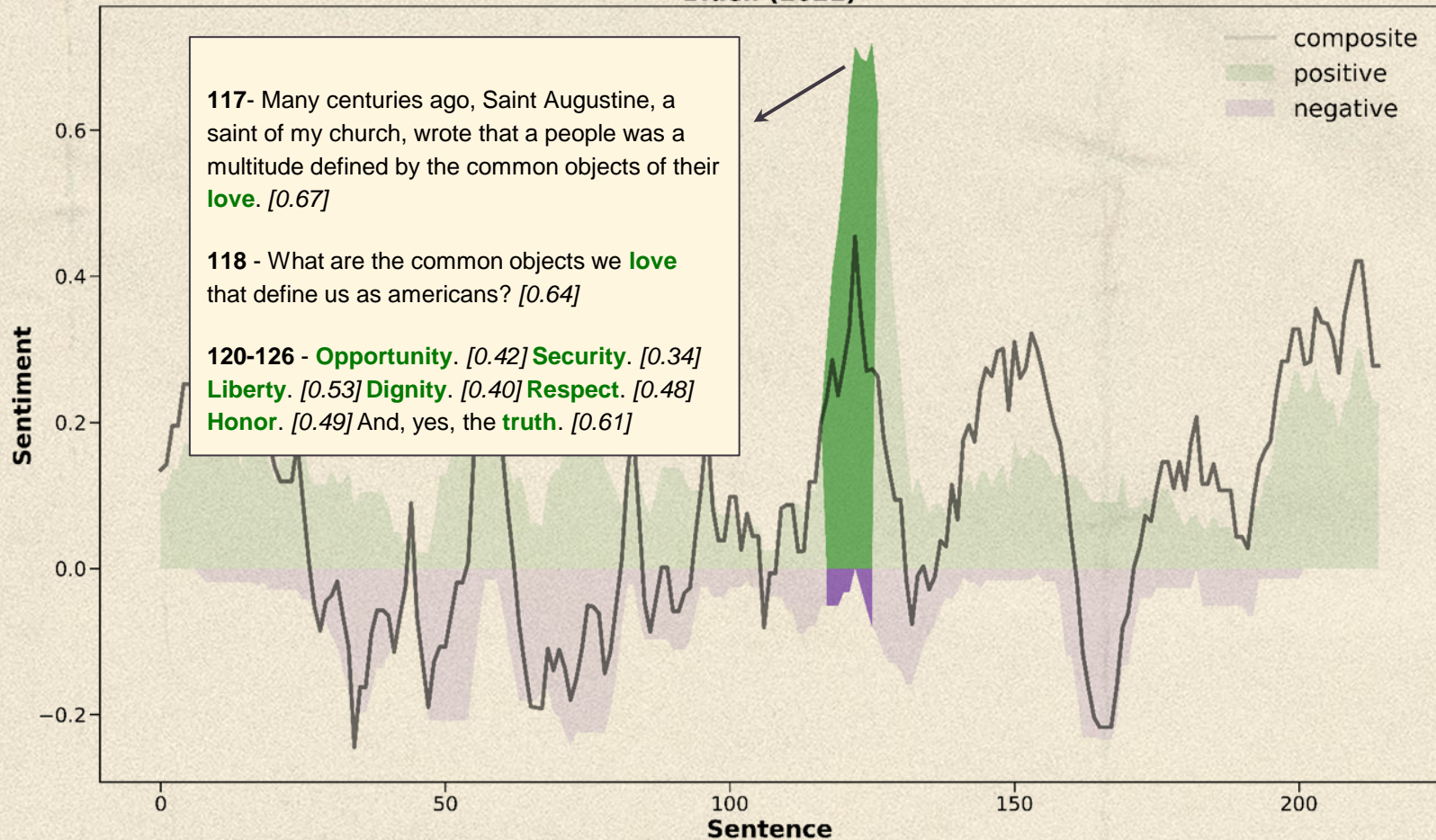


Workers preparing to disinfect a central railway station

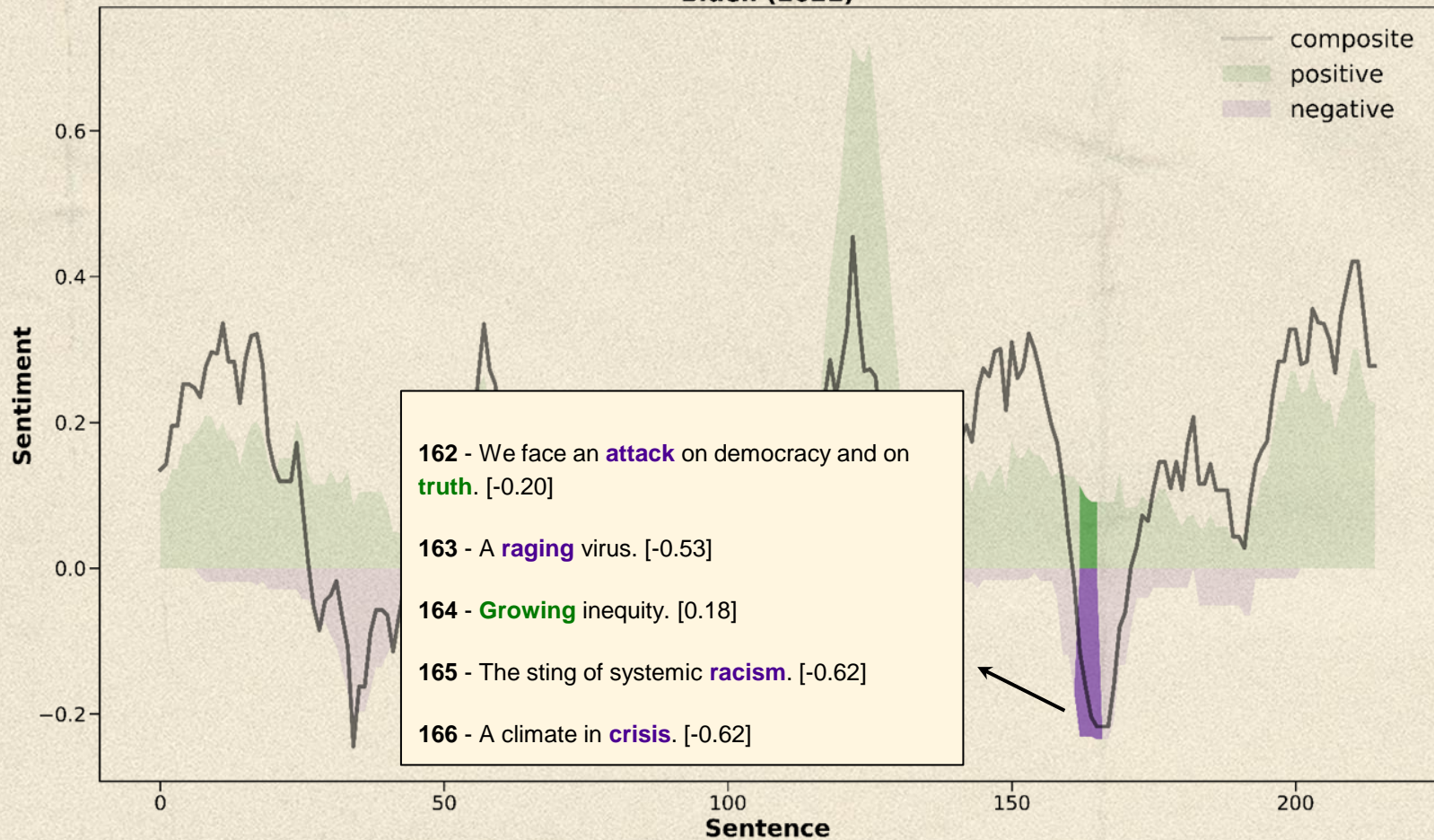
Biden (2021)



Biden (2021)



Biden (2021)



Conclusions

- I. VADER misses negations, despite being rules-based
- II. Overall, VADER captures most sentiment; especially when orators use enumeration
- III. Mixed emotions in political speech can often confuse VADER in determining sentiment



Questions?



CREDITS:

This presentation template was created by Slidesgo, including icons by Flaticon, infographics & images by Freepik